



Harvey County News

IMPORTANT DATES

VOLUME 1, ISSUE 1

SPRING 2012

- **Courthouse Closed:**
Fri., April 6
(12 p.m.—5 p.m.)
Mon., May 28
(All day)
- **Homestead filing due:**
Sun., April 15
- **Candidate filing due:**
Fri., June 1

INSIDE THIS ISSUE:

- Naming Harvey County 2
- Heritage Fund Awarded 2
- Rendezvous Attracts Thousands 3
- Job Openings 4
- Calendar 4

We're on the web!
www.harveycounty.com

Inaugural newsletter welcome

Welcome to the first edition of the Harvey County News. As chairman of the Harvey County Commission I believe in using several different ways to reach Harvey County citizens with information about what is happening within our county. This is a new venue for the county and we hope you will let us know what you think.

We will utilize a quarterly format for now and hope to feature different county departments and personnel to let you become more familiar with the various duties and functions. We will also keep a list of current projects and activities that will allow you to track things that are of specific interest to you and others. Our editor, Heidi Huber, can be contacted at hhuber@harveycounty.com or 316-284-6801 to take your feedback or questions.

The political climate at the



Marge Roberson, Chairman Harvey County Commission District 2

federal and sometimes state level that seems to prevail today is one of mistrust and incivility. Political parties are often pitted against each other, rather than being encouraged to work together for the common good of people. It has become easier to react to

“sound bites” rather than think through the issues. We think this newsletter can become a way for you to receive accurate information about a variety of issues to help you stay informed about the county. We can have differing opinions and ideas, but as long as we always have civil discourse and respect each other we can usually find that common ground that is most productive for all of us.

We continue to encourage people to attend commission meetings every Monday and to also contact the commissioners by phone, email or in person. We look to *The Newton Kansan* to keep the community up-to-date and to print legal notices we are required to publish. Our administration and staff can be accessed by phone, through the web page or in person. Help us to continuously find ways to increase communication and information flow to our citizens.

On the road again

By Jim Meier

For being only 540 square miles, Harvey County has an inordinately high infrastructure responsibility. Surfaced or paved county roads stretch 165.75 miles, enough to reach from Wichita to Oklahoma City. Unpaved roads amount to 74.28 miles. But it's our bridges that set us apart: 283 in all, which if placed end to end would span more than 4.5 miles. Because of numerous waterways and many miles of roadways, there are 821 culverts on our

inventory, as well as about 3,000 road signs. Maintaining all of these is some of what we do in the road and bridge department.

The maintenance of bridges and roadways is similar to raising children in that what worked for one may not work well for the next, for a myriad of reasons. A quick fix gets us on to the next challenge, but the fix is often as temporary as it was quick. A deliberate design process is essential because it discovers and

addresses all the issues, as well as ensures compliance to state specifications. The result is a solution which is a long-term one. Basically, you get out of it what you put into it.

There are many other capacities facilitated by this department. Utility companies apply for permits through the office to perform work installing new lines or maintaining existing ones. Over time, drainage issues arise which may threaten personal property

See *On the Road Again*, pg. 3

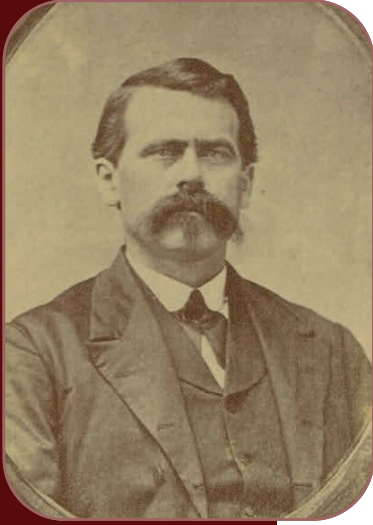


Photo: Kansas State Historical Society

James Harvey, fifth governor of Kansas

“It was said that he was a superior student with a nearly photographic memory.”



The Warkentin House

Naming Harvey County

From Harvey County Historical Museum

No, it wasn't Paul or Fred. It was Jim. Or, more properly, James. The man for whom Harvey County was named was James Madison Harvey, fifth governor of Kansas.

The story of how the county came to be named after the governor is interesting. Opposition to the creation of the new county developed in the Kansas State Senate in 1872. The act organizing the county had passed the House of Representatives without a dissenting vote. But in the Senate, the measure passed by only one vote. Opponents to the bill wanted to reconsider the vote but the Harvey County backers suggested they all go to lunch and take up the reconsideration afterward. The opponents went to lunch. The backers took the just-passed bill and went straight to the governor's office to get him to sign it. They promised to name the county after him if he did. And he did!

Okay, that's the interesting part of the story. But just as interesting is the man.

James Madison Harvey was born in Monroe County, Virginia, on Sept. 21, 1833, to Thomas and Margaret Harvey. The Harvey family moved to Indiana, then Iowa and then to Illinois. It was in the latter state that James received his education.

It was said that he was a superior student with a nearly photographic memory. He learned the profession of surveying.

Harvey married Charlotte Richardson Cutter of Adams County, Illinois, in 1854 and the family moved to Riley County, Kansas. He practiced his surveying profession until the outbreak of the Civil War. He enlisted as a soldier in the Union army and ultimately was promoted to captain and commanded the Fourth and Tenth regiments of the Kansas Volunteer infantry. He mustered out of the service in 1864 and returned to Riley County and his farm and family.

Harvey then entered politics, being elected from Riley County to the House of Representatives in 1865 and reelected in 1866. He then was elected to the Senate in 1867 and served about half his term before running for governor. He won his first term as governor in 1860 and was reelected to that office in 1870. In those days, gubernatorial terms were two years.

Following his time at the statehouse, Harvey returned to his Riley County farm and his surveying practice. But in 1874, Alexander Caldwell resigned from the U.S. Senate and the state legislature elect-

ed Harvey to fill out his unexpired term. In those days, U.S. Senators were elected by state legislatures.

He did not seek election to a full term in the U.S. Senate but chose to return again to the farm. He then spent several years surveying for the government in New Mexico, Arizona, Nevada and Utah.

In the early 1880s, Harvey developed Bright's Disease, known today as nephritis, a kidney disease. As a result, the family moved back to Virginia in 1884 seeking a milder climate but returned to Riley County in 1890. James Madison Harvey died of kidney failure on April 15, 1894. He was 61 years old.

During his four years as governor, Kansas saw an increase in road construction, the formation of the state board of agriculture, the creation of the position of the state librarian, formation of several counties and cities, including Sedgwick, Newton, Halstead and Burrton. The Union Pacific Railroad completed its construction across Kansas to Denver and the Atchison, Topeka and Santa Fe Railroad was nearing the final miles of its construction across the state.

State historians agree—Harvey's administration was one of his greatest accomplishments.

Heritage Fund Awarded

Harvey County was recently awarded a \$20,000 Heritage Trust Fund grant for 2012.

This fund will be used for the preservation of Newton's Warkentin House. The Heritage Trust Fund is a state program that provides matching funds for the preservation of properties listed in the Na-

tional Register of Historic Places or the Register of Historic Kansas Places.

The fund reimburses expenses for projects that preserve or restore historic properties. Qualifying expenses include professional fees and construction costs.

These funds will be used for

the Warkentin House throughout the year to make improvements like fixing the foundation of the building.

“It's an honor to have our community be selected as a recipient of this grant,” said Register of Deeds, Margaret Hermstein.

Rendezvous attracts thousands

An extraordinary gathering welcomed about 6,000 boy scouts and friends to Harvey County West Park Jan. 13-15.

The 35th Annual Trappers' Rendezvous attracted a record number of scouts from the Midwest for a rousing weekend of winter fun.

For more than three decades, Boy Scouts have met in Kansas, rain or shine, for the annual Trappers' Rendezvous.

The first Trappers' Rendezvous started out with only a little more than a hundred scouts. It's since grown to a major event that draws thousands of people.

The tradition of the rendezvous was started by General William Ashley's men of the Rocky Mountain Fur company in 1825. Mountain man James Beckworth described the festivities as a scene of "mirth, songs, dancing, shouting, trading, running, jumping, singing, racing, target shooting, and yarns, with all sorts of extravagances that mountain men, trappers, and native Americans could invent."

Following in the tradition of the mountain men and trappers of the early 1800s, scouts and scouters gather one weekend every January to recreate life as mountain men



and trappers of the early 1800s.

Thousands of scouts set up camp and it's all about tradition, even in the dead of winter. There are a few guidelines. First and foremost, if you want to stay warm, keep moving.

This year, participants brought trading goods like furs, antlers, beads, handmade items and

other trinkets. Warm temperatures made the weekend even more enjoyable for scouts at Harvey County West Park.

Scouts also enjoyed outdoor activities like tomahawk throws, black

powder shooting and some participants set up primitive camps for scouts to observe. Several men show up as "Mystery Mountain Men." The

Mountain Men then portray a famous trapper of the past and hand out tokens to scouts who find them. Scouts try to find all the Mountain Men to collect the complete set of tokens.



Following traditions set in 1825, these boy scouts are serious about the annual Trappers' Rendezvous.

Scouts do everything from learn to start fires and build shelter to shopping, mountain man style. Most importantly, leaders say they want scouts to trade in their fears for a chance to see just how strong they can be. Bartering for goods is just one of the many different ways event organizers set out to teach scouts about history. The kids get the chance to travel back to the 1800s to a simpler time when tools

were crafted by hand and meals were made with whatever was available.

Each year, Harvey County has the opportunity to welcome these guests to our park.

The growth of the event is a testament to the organization and quality of its offerings. Look for another group of eager youth to arrive at Harvey County West Park again next January!



James Beckworth described the festivities as a scene of "mirth, songs, dancing, shouting, trading, running, jumping, singing, racing target shooting and yarns."

Road and Bridge

From Page 1

and require us to excavate silt from ditches. Also, every mile of county road is mowed three times during the season, and tree trimming helps improve visibility for motorists. Tracking vehicle accident data helps us identify if traffic control improvements are necessary.

We have 159 years combined experience in the road and bridge department. Not many departments

can boast that; especially considering there are 13 employees.

The work is dangerous sometimes, difficult most of the time and often takes place in the worst conditions Kansas weather can offer. This past summer when it was 110 degrees, you would've found a crew on a remote road raking 300-degree asphalt patching the pavement. In the winter, when most

people are tucked away at home watching it snow, there will be men driving very heavy trucks on very slick roads plowing a clear path for everyone else. It isn't glamorous work at road and bridge, but it is important work.





Harvey County

800 N Main St.

Newton, KS 67114

Phone: 316-284-6806

Fax: 316-284-6811

It is the mission of Harvey County to provide our citizens with beneficial, essential, public services in a professional, courteous and fiscally responsible manner.

Harvey County JOB OPENINGS

Data Processing Director

Full-time position available for a highly motivated individual who is responsible for the direction and management of the county's information technology needs.

QUALIFICATIONS:

Bachelor's Degree or Technical School Certification in Computer Science, Information Systems or closely related field and two years experience in network systems administration.

Applications must be submitted by 5:00 p.m. on April 4, 2012.

Detention Center Nurse

Part-time position, 20-30 hours per week. Primary duties include the physical assessment and medical care of inmates.

QUALIFICATIONS:

LPN with current state licensure.

Applications must be submitted by 5:00 p.m. on April 13, 2012.

Heavy Equipment Operator

Full-time heavy equipment operator at the Transfer Station.

QUALIFICATIONS:

High School diploma/GED and able to lift 60 lbs. Requires Class A CDL.

Applications must be submitted by 5:00 p.m. on April 18, 2012.

Applications are available at the Harvey County Courthouse administration department. You may also apply by going to www.HRePartners.com.

April 2012

Sun	Mon	Tue	Wed	Thu	Fri	Sat
1	2 Commission Meeting	3	4	5 Treasurer's Office Closed 8-9 a.m. Storm Spotter Training 6:30 p.m.	6 Courthouse Closed 12-5 p.m.	7
8	9 Commission Meeting	10	11 Health Dept. Vaccination Clinic St. Mary's 8:30-10 a	12 Health Dept. Vaccination Clinic Northridge 2:45-6p	13	14
15 Homestead Filing deadline	16 Commission Meeting	17	18 Health Dept. Vaccination Clinic South Breeze 2:45-6 p	19 Health Dept. Vaccination Clinic State Creek 2:45-6p	20 Health Dept. Vaccination Clinic Sedgwick HS 9-2:30p	21
22	23 Commission Meeting	24 Health Dept. Vaccination Clinic Hesston HS 9:30-11 a	25 Health Dept. Vaccination Clinic Burrton 8:30-10a Sunset 2:45-6p	26	27 Health Dept. Vaccination Clinic Walton 2-3:30p	28
29	30 Commission Meeting					

May 2012

Sun	Mon	Tue	Wed	Thu	Fri	Sat
		1 Vehicle/DMV closed	2 Vehicle/DMV closed Health Dept. Vaccination Clinic Newton High 9:30-11:30a	3 Vehicle/DMV closed Health Dept. Vaccination Clinic Chisholm 7/8 8:30-10a	4 Vehicle/DMV closed	5
6	7 Commission Meeting Vehicle/DMV closed	8 Vehicle/DMV closed	9	10 2nd half taxes due	11	12
13	14 Commission Meeting	15	16	17	18	19
20	21 Commission Meeting	22	23	24	25	26
27	28 Courthouse Closed 8 a.m.-5 p.m.	29 Commission Meeting	30	31		

June 2012

Sun	Mon	Tue	Wed	Thu	Fri	Sat
					1 Candidate Filing Deadline	2
3	4 Commission Meeting	5	6	7	8	9
10	11 Commission Meeting	12	13	14	15	16
17	18 Commission Meeting	19	20	21	22	23
24	25 Commission Meeting	26	27	28	29	30