



Harvey County News

VOLUME 2, ISSUE 3

SUMMER 2013

UPCOMING DATES

- **Courthouse Closed**
July 4
Sept. 2
- **Health Dept. Breastfeeding Class**
July 1, 4 p.m.
July 15, 11 a.m.
- **West Park Educational Series**
July 13, 7 p.m.
Slip Slide Away

Aug 10, 7 p.m.
Roadkill Stew

Sept 14, 7 p.m.
Bump in the Night

INSIDE THIS ISSUE:

- Sedgwick Nursery 2
- Appraising Harvey County 3
- Calendar 4

Harvey County health

By Lynnette Redington

Every year in the United States, seven out of 10 deaths are due to preventable chronic diseases such as diabetes and heart disease.

In fact, chronic diseases account for a whopping 75 percent of national health care spending, yet only 3 percent of our health care dollars go toward prevention. Here in Harvey County nearly 40 percent of our residents are living with high cholesterol, which is a major risk factor for heart disease. But there are steps we can take to help turn these statistics around.

The Healthy Harvey Coalition is working to make prevention a part of everyone's lives. Research shows that investing just \$10 per person each year in proven, community-based public health efforts can save the nation more than \$16 billion within five years. That's a \$5.60 return for every \$1 invested. The coalition members issue a call to action about the value of prevention to our lives, pocketbooks and futures.

As Harvey County Health Department director, I am so proud of Harvey County residents, who are celebrating prevention and being healthy role models for their communities and loved ones. We all have a role to play in making our communities healthier places and the Harvey County



Public Health
Prevent. Promote. Protect.

Health Department is excited to help lead the way.

Many small preventive steps can add up to make a big difference in transforming a health care system focused on treatment to one that equally values prevention.



Healthy Harvey Coalition members endorsed the efforts to make prevention a priority by signing a pledge to eat healthier, be more physically active and say no to tobacco.

"Our nation and community simply cannot sustain the current trajectory of health care spending and chronic disease rates," said Harvey County administrator John Waltner.

"Fortunately, we know that investing in prevention and public health can make an enormous difference."

Supporting public health approaches to better health does reap life-saving returns. For example, research shows that each 10 percent increase in local public health spending contributes to a nearly 7 percent decrease in infant deaths, a 3.2 percent decrease in cardiovascular deaths and a 1.4 percent decrease in diabetes-related deaths.

Public health and prevention are critical pieces in creating a healthier nation.

Harvey County Health Department helps educate and engage Americans in the movement to create a healthier America for ourselves and the generations to come.

"We all have a role to play in making America the healthiest nation in one generation. And it starts with each of us taking the simple preventive steps that lead to better health," said Georges C. Benjamin, executive director of the American Public Health Association.

To learn more about public health efforts in your community, visit harveycounty.com and go to the Health Department page.

Sedgwick Nursery

by Kristine Schmucker

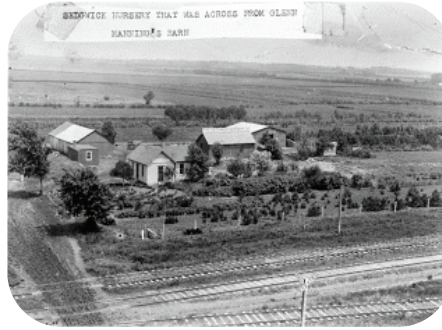
On what was surely a hot Kansas day in August 1887, 25-year-old Chauncey A. Seaman arrived in Sedgwick, Kan. Eighteen years after Charles Schaefer established the first business in Sedgwick, the town was thriving.

A Kansas native, Seaman was born in Linn



Chauncey A. Seaman

County, on March 24, 1862. Seaman, no doubt, was looking for a place to establish himself and make a life. He soon became involved in a local business, the Sedgwick Nursery, owned and operated by Samuel B. Shirk. Shirk had moved to Harvey County from Lancaster, Pa., in 1884 with his wife Barbara, one son, David, and two daughters, Medessa and Anna. The nursery was located at 490 E. 7th near Sedgwick and consisted of 200 acres. In 1886, Barbara died; a few years later Shirk married for the second time to a widow, Anna Musser. Soon after Chauncey A. Seaman arrived in Sedgwick, he began working for Shirk at



A view of Sedgwick nursery, circa 1910

the nursery. On Sept. 10, 1889, Seaman married Anna Shirk.

In 1892, Seaman bought Sedgwick Nursery from his father-in-law. For the next several years, Seaman operated the successful business. At some point John P. Schermerhorn became a business partner in the nursery.

In May 1900, Seaman sold his part of the business to Schermerhorn. *The Sedgwick Pantagraph* noted the change of ownership with praise for what the business

had meant to the community: “The Sedgwick nursery company, which organized several years ago proved one of the best things for the town that ever located here, as it gave employment to a large force of men, conducted a big mail business which benefitted the post office and printer, and was an institution which advertised the town far and wide.”

Schermerhorn continued to operate a nursery in Sedgwick until approximately 1910.

Seaman continued to actively work in the Sedgwick community, serving as mayor from 1899-1900 and 1909-1911. During this time he was also the president of the Sedgwick State Bank from 1900-1940. Seaman retired in 1940 due to ill health and passed away at Bethel Hospital, Newton, on Nov. 13, 1947.



Nursery workers grafting, circa 1898

Appraising Harvey County

By Craig Clough

The general public expects to enjoy services such as public schools, police protection, fire protection, good streets, running water and nice parks, just to name a few. Sometimes what gets lost in the picture is how these services are funded.

Most people understand about paying sales tax, paying motor vehicle taxes when we renew our tags every year and paying a fee when we go golfing or use the city swimming pool.

However these items only cover a small percentage of the cost. Income tax is collected at the federal and state levels but not at the local level, so how is the additional cost of expected service being paid for? That would leave property tax as the primary method funding local public services.

The County Appraiser's Office is responsible for valuing real property (land and buildings), personal property (boats, trailers, golf carts, etc.), and oil and gas leases. The Appraiser's Office also includes GIS mapping that is not only used by the Appraiser's Office but by other county departments, cities and



private companies.

The Harvey County Appraiser's Office has 11 employees including the county appraiser, deputy appraiser and three field appraisers. All appraisers are required to successfully complete tested courses before being allowed to set appraised values. All employees of the appraiser's office participate in continuing education in their area of responsibility.

Kansas assessment guidelines are actually laws included in the Constitution of the State of Kansas in Article 11 - Finance and Taxation. These guidelines state that all property shall be appraised annually. Also, the guidelines state that every parcel shall be inspected on site at least once every six years unless

there is a building permit issued or the property sells, then it is inspected that year.

When a property sells we are required to contact the buyer and/or seller and verify the conditions behind the sale such as: was the sale an open market sale, a foreclosure, a sale between family members or did it involve a trade of property?

These are some examples of verifying a sale.

Every year the Harvey County Appraiser's Office is required to reappraise approximately 18,500 real estate parcels, 4,100 personal property filings and 117 oil and gas leases.

These valuations are multiplied by the proper assessment rate to determine an assessed value. This assessed value is then multiplied by the mill levy to determine the general property tax.

Understandably, most people do not enjoy paying taxes and property tax appears to be the most hated. It is important to remember that paying taxes gives citizens a say in how the government is run.

“Most people understand about paying sales tax, paying motor vehicle taxes when we renew our tags every year and paying a fee when we go golfing or use the city swimming pool.”

Job Opening

Health Department Nurse

Full-time Registered Nurse to work with nursing services for adult and child health and physicals, immunizations, family planning, STD and WIC. BSN required or related experience or combination of education and experience. Ability to speak Spanish a plus.

Apply at www.HRePartners.com or applications are available at the Harvey County Courthouse, Administration office. EOE

Pedestrian Safety

Now that summer is in full swing, there are a lot more people walking in our neighborhoods and downtown. As drivers and pedestrians, it is our responsibility to know the laws pertaining to pedestrian safety.

Drivers:

- Always yield to pedestrians in a crosswalk
- Be careful at intersections when making right turns on red: 90 percent of pedestrians die if hit by a car at 40 mph, compared to 5 percent at 20 mph
- Use caution when driving where people gather; like neighborhoods and parks

Pedestrians:

- Be sure to cross the street at crosswalks
- In the absence of pedestrian signals, cross with the green light. In the presence of pedestrian signals, start crossing with the WALK light after looking both ways
- The driver may also have a green light
- If there is no sidewalk, walk along the shoulder, facing traffic

July

SUNDAY	MONDAY	TUESDAY	WEDNESDAY	THURSDAY	FRIDAY	SATURDAY
	1 Commission Meeting 10 a.m. blood pressure check Health Dept. 4 p.m. breastfeeding class Health Dept.	2	3	4 Courthouse Closed	5	6
7	8 Commission Meeting	9	10	11	12	13 Slip Slide Away West Park Series 7 p.m.
14	15 Commission Meeting 11 a.m. breastfeeding class Health Dept.	16	17	18	19	20
21	22 Commission Meeting	23	24	25	26	27 Rec Center HopeFest Health Dept 10 a.m.—2 p.m.
28	29 Commission Meeting	30	31			

August

SUNDAY	MONDAY	TUESDAY	WEDNESDAY	THURSDAY	FRIDAY	SATURDAY
				1	2	3
4	5 Commission Meeting	6	7	8	9	10 Roadkill Stew West Park Series 7 p.m.
11	12 Commission Meeting	13	14	15	16	17
18	19 Commission Meeting	20	21	22	23	24
25	26 Commission Meeting	27	28	29	30	31

September

SUNDAY	MONDAY	TUESDAY	WEDNESDAY	THURSDAY	FRIDAY	SATURDAY
1	2 Courthouse Closed	3 Commission Meeting	4	5	6	7
8	9 Commission Meeting	10	11	12	13	14 Bump in the Night West Park Series 7 p.m.
15	16 Commission Meeting	17	18	19	20	21
22	23 Commission Meeting	24	25	26	27	28
29	30 Commission Meeting					